



Trinity River Restoration Program



Record of Decision (ROD), 2000

“to restore and maintain the Trinity River's anadromous fishery resources”

[by]

“rehabilitating the river itself, restoring the attributes that produce a healthy, functioning alluvial river system”



Channel rehabilitation: Progress and planning

Mike Dixon, Ph.D.

Implementation Branch Chief

13 June 2018

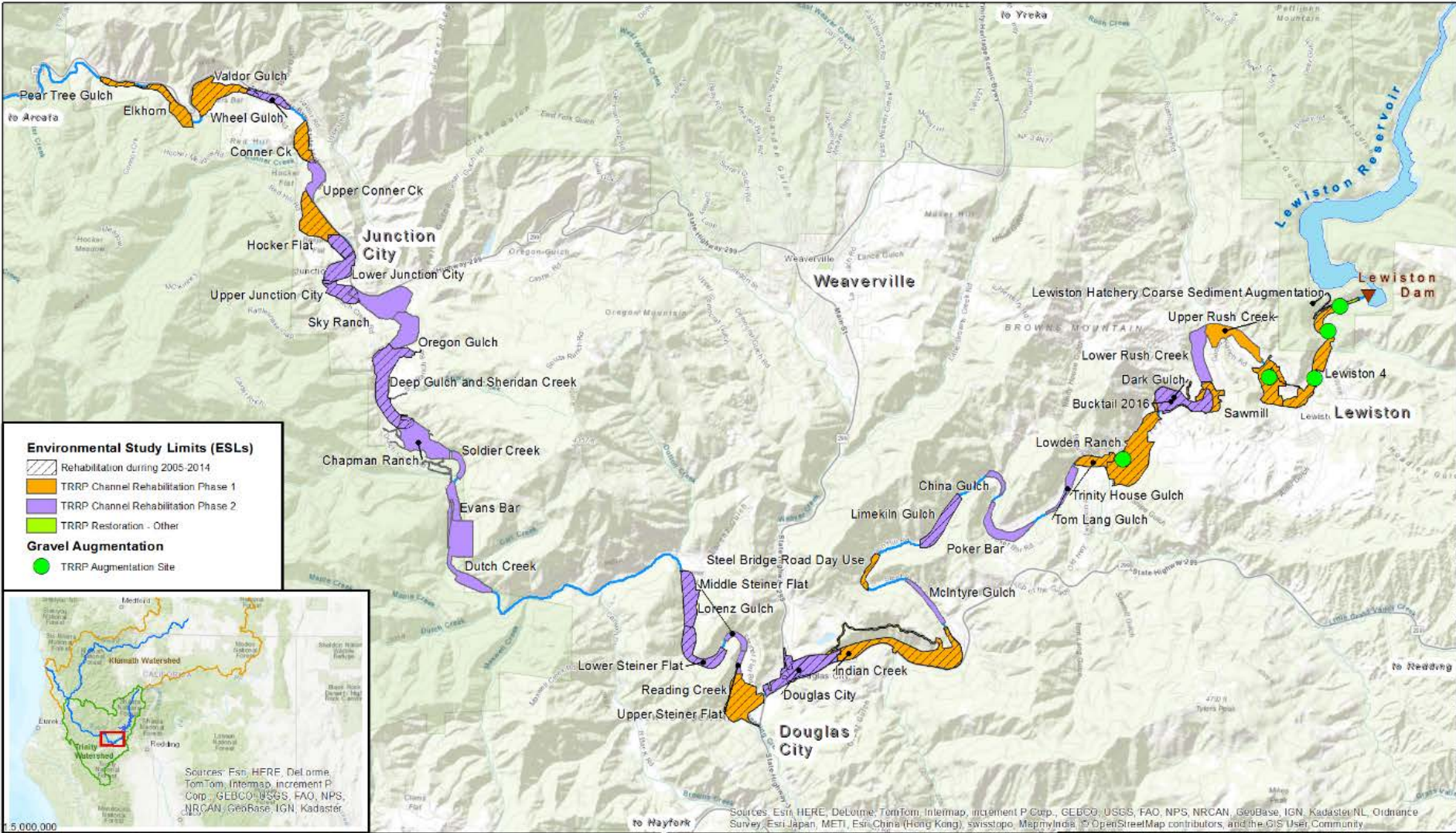
Bean counting

ROD identified 44 channel rehabilitation sites and 3 specific side channels.

Of these, 29 channel rehabilitation sites and all three side channels have been constructed, but...

- Learning has led to identification of additional locations
- Many constructed sites are not performing optimally
- Some of the 47 sites are impractical because of land ownership and/or or are believed to be functioning adequately.

So what's left?



Environmental Study Limits (ESLs)

- Rehabilitation during 2005-2014
- TRRP Channel Rehabilitation Phase 1
- TRRP Channel Rehabilitation Phase 2
- TRRP Restoration - Other

Gravel Augmentation

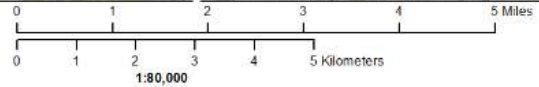
- TRRP Augmentation Site



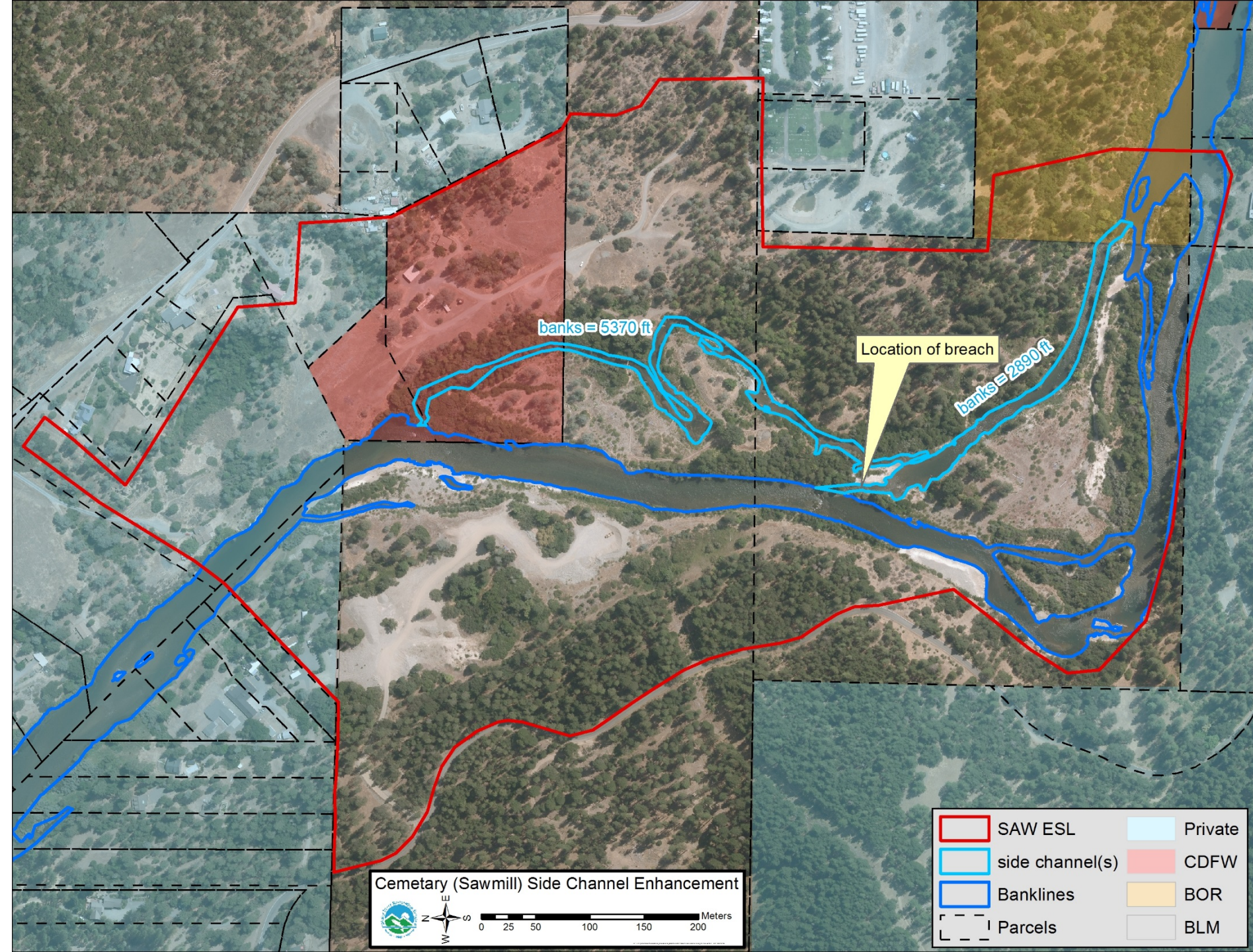
Sources: Esri, HERE, DeLorme, TomTom, Intermap, increment P Corp., GEBCO, USGS, FAO, NPS, NRCAN, GeoBase, IGN, Kadaster

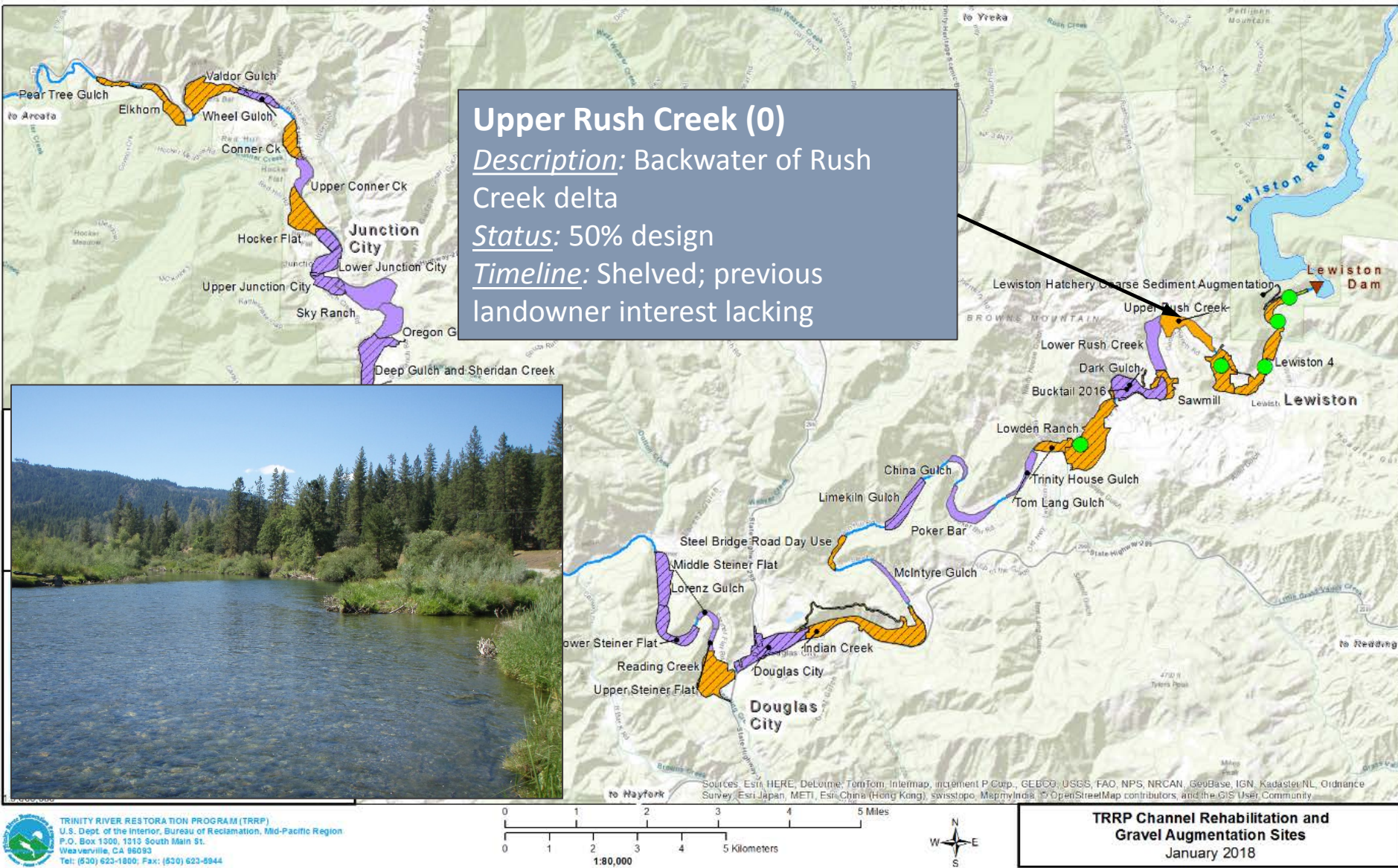
Sources: Esri, HERE, DeLorme, TomTom, Intermap, increment P Corp., GEBCO, USGS, FAO, NPS, NRCAN, GeoBase, IGN, Kadaster, NL, Ordnance Survey, Esri Japan, METI, Esri China (Hong Kong), Swisstopo, MapmyIndia, © OpenStreetMap contributors, and the GIS User Community

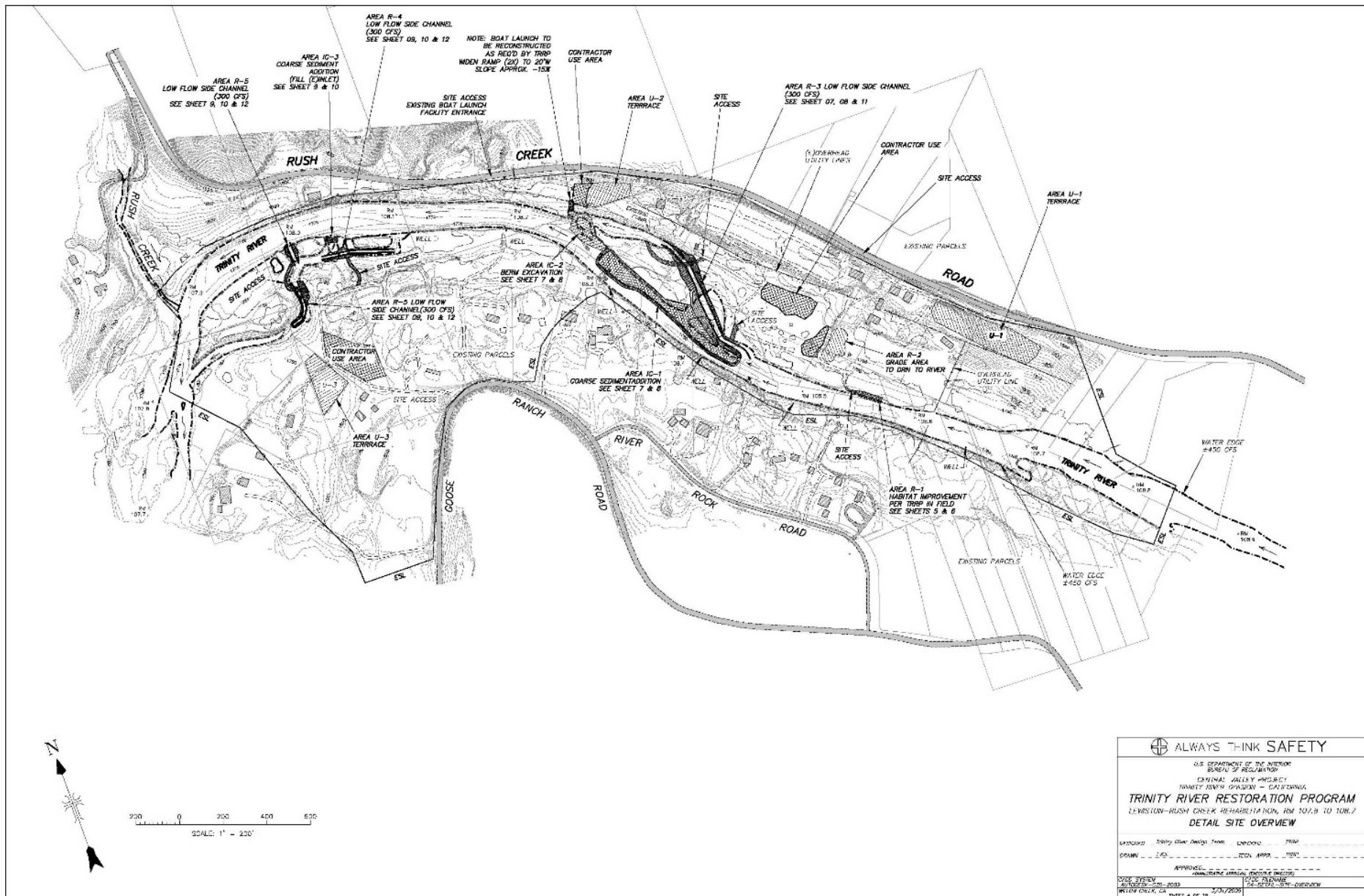
TRINITY RIVER RESTORATION PROGRAM (TRRP)
U.S. Dept. of the Interior, Bureau of Reclamation, Mid-Pacific Region
P.O. Box 1300, 1310 South Main St.
Weaverville, CA 96093
Tel: (530) 623-1850; Fax: (530) 623-9944

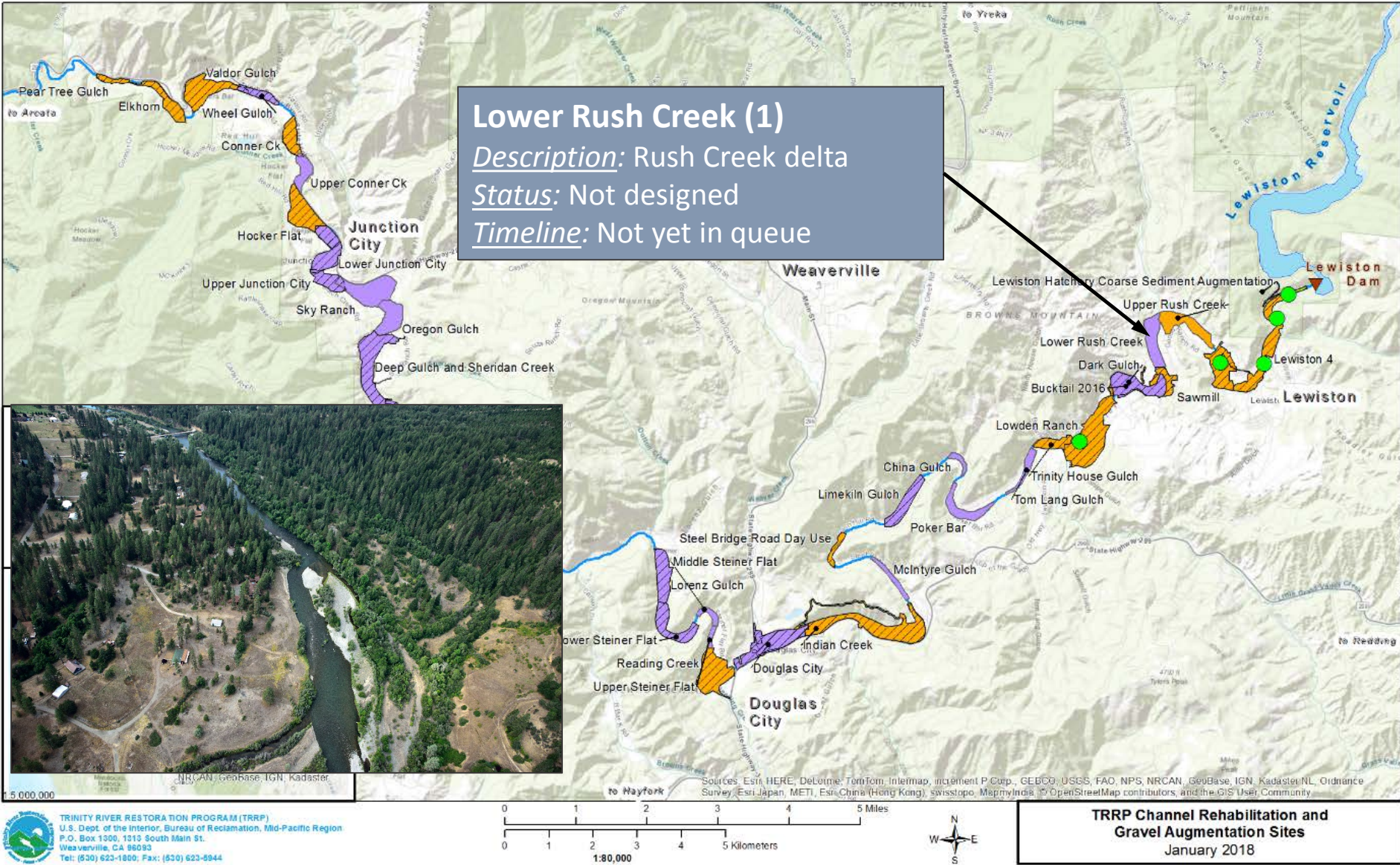


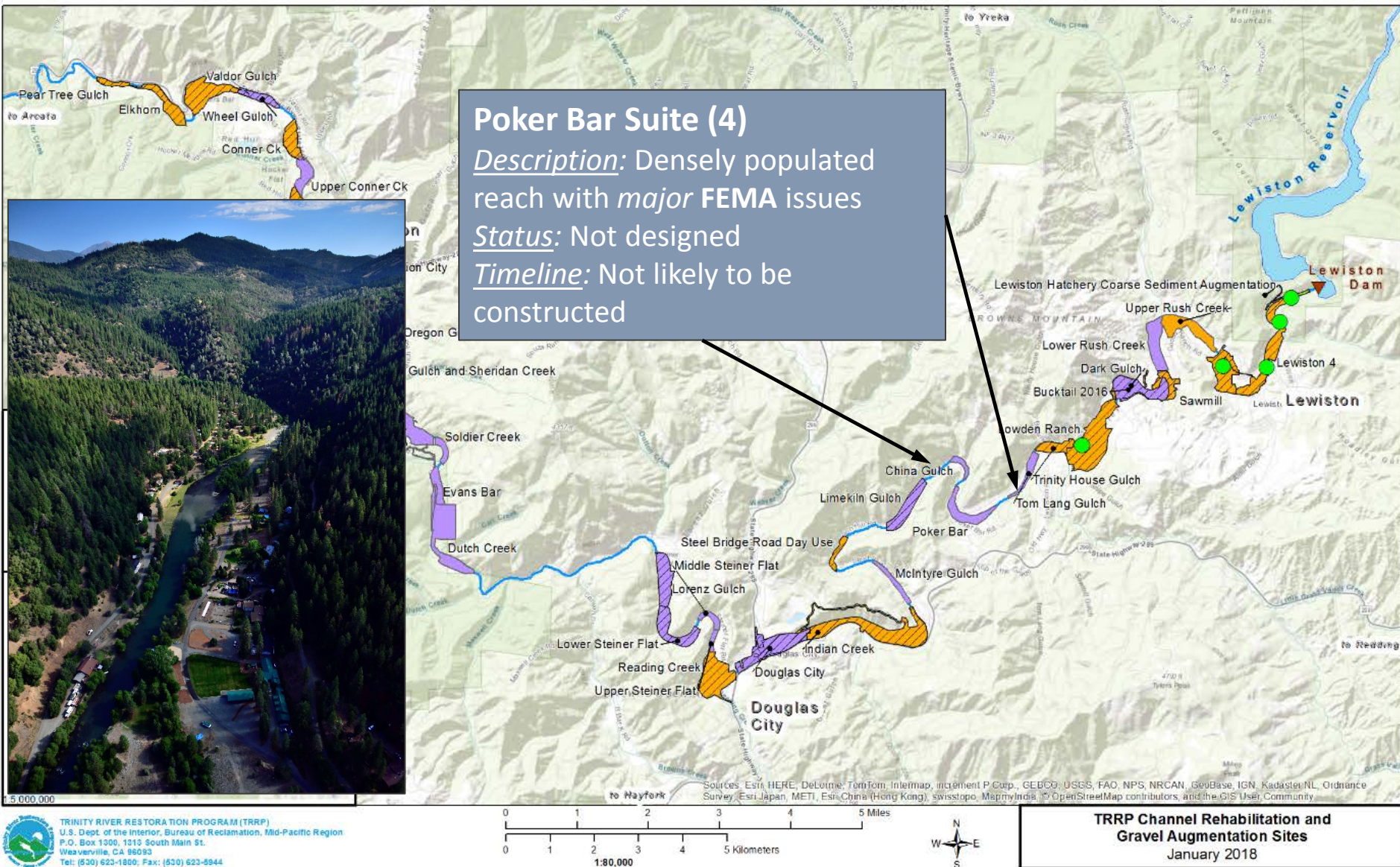
TRRP Channel Rehabilitation and Gravel Augmentation Sites
January 2018

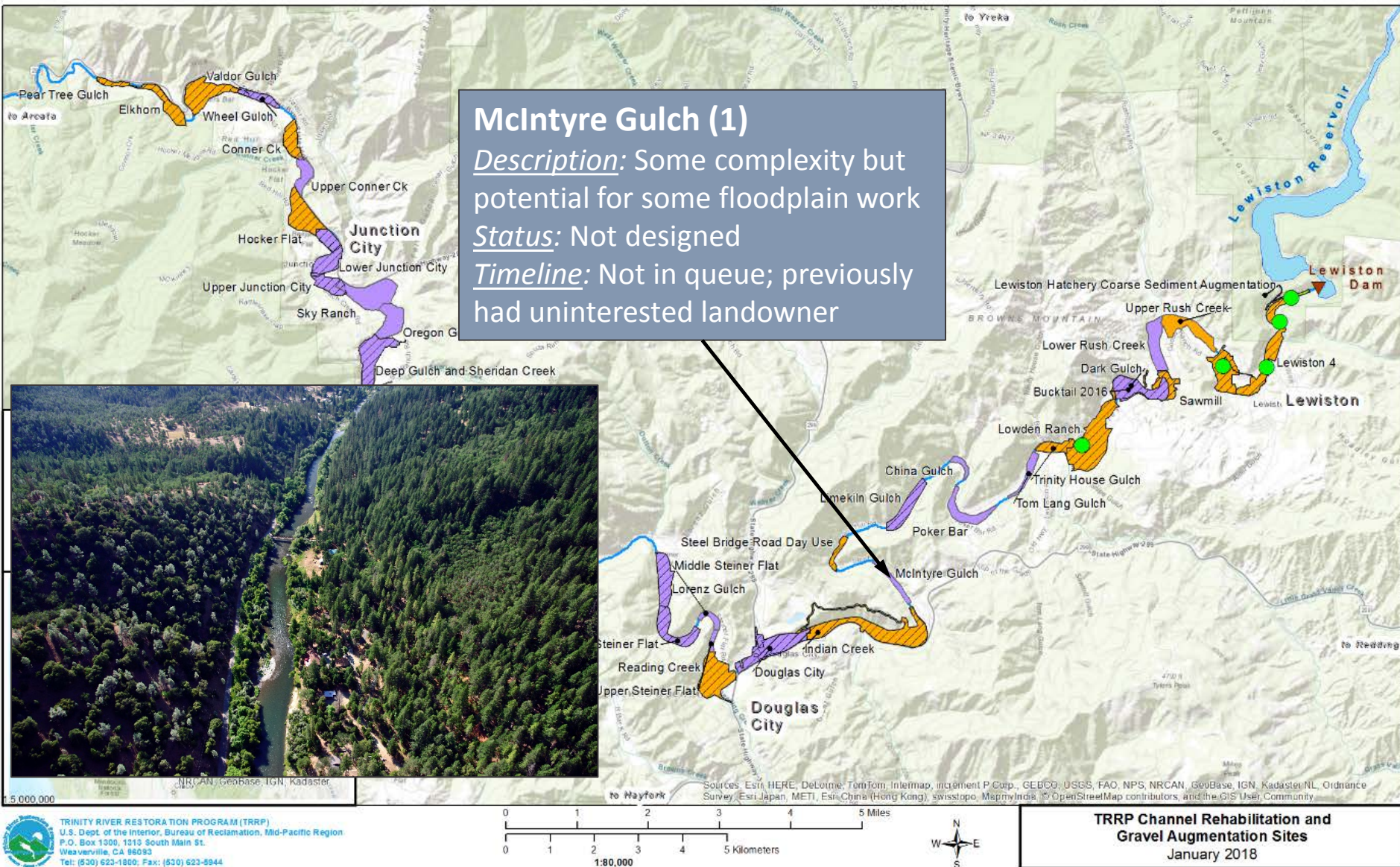


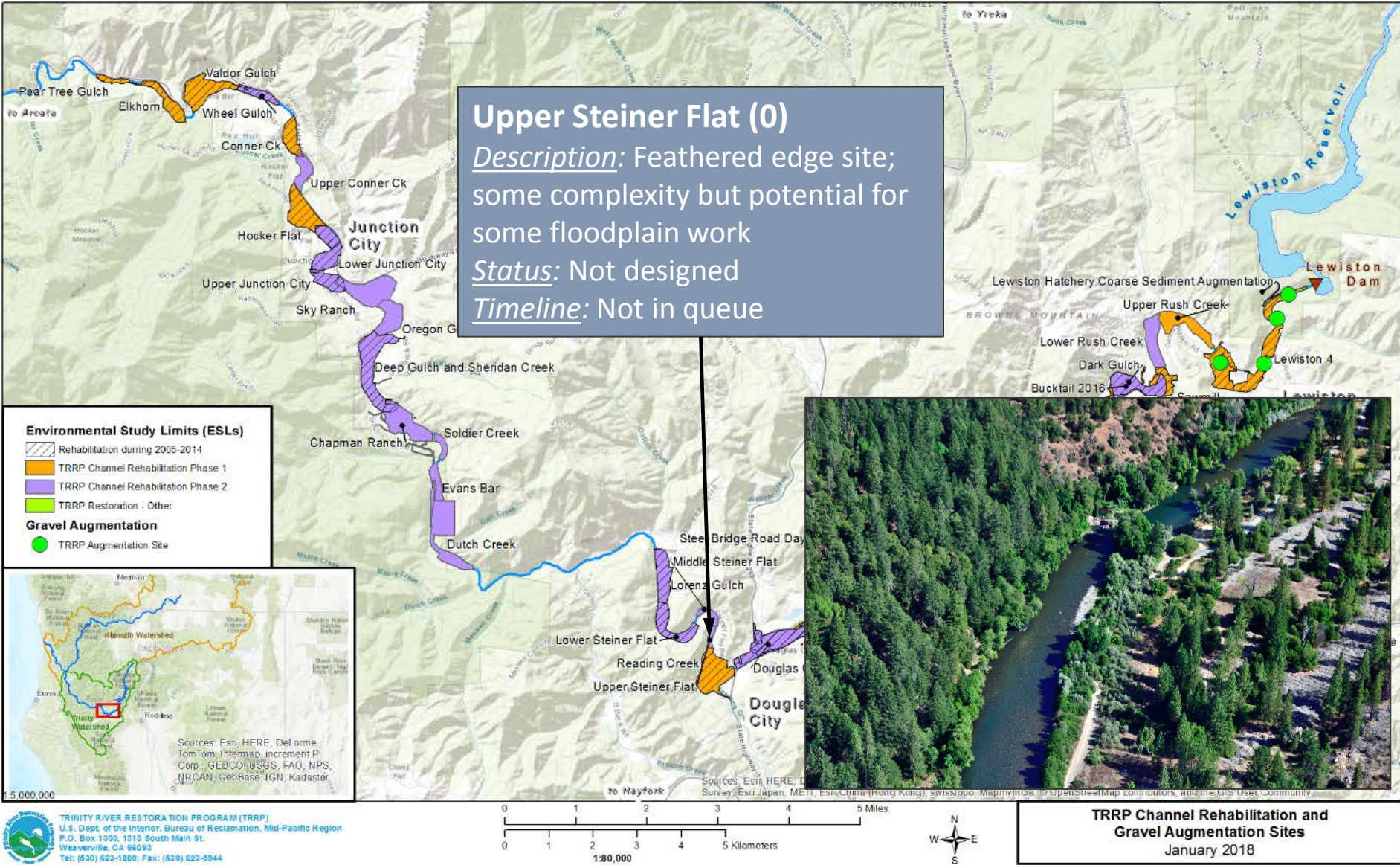


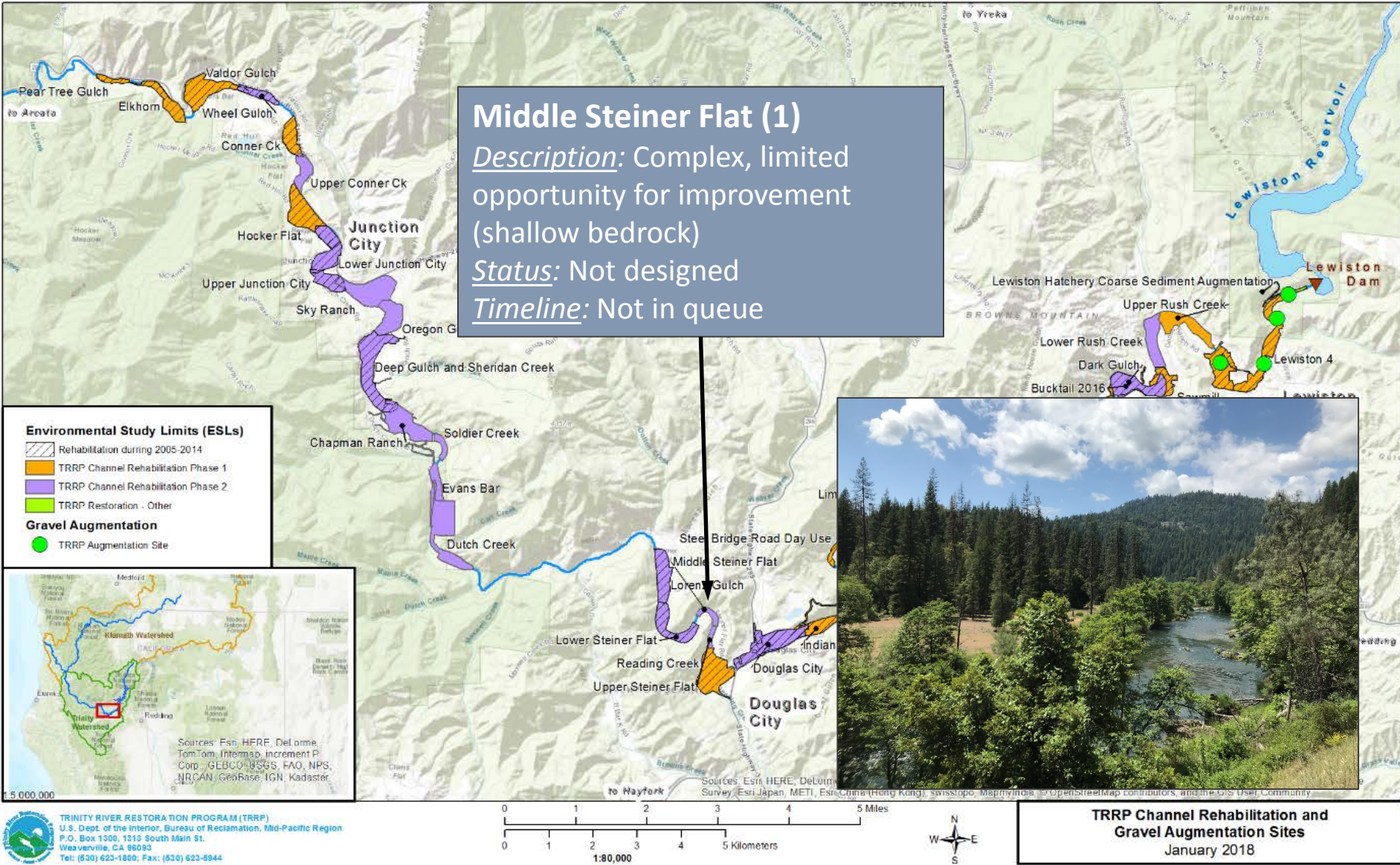












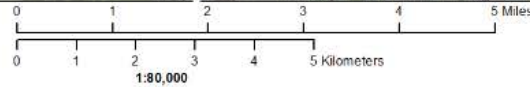
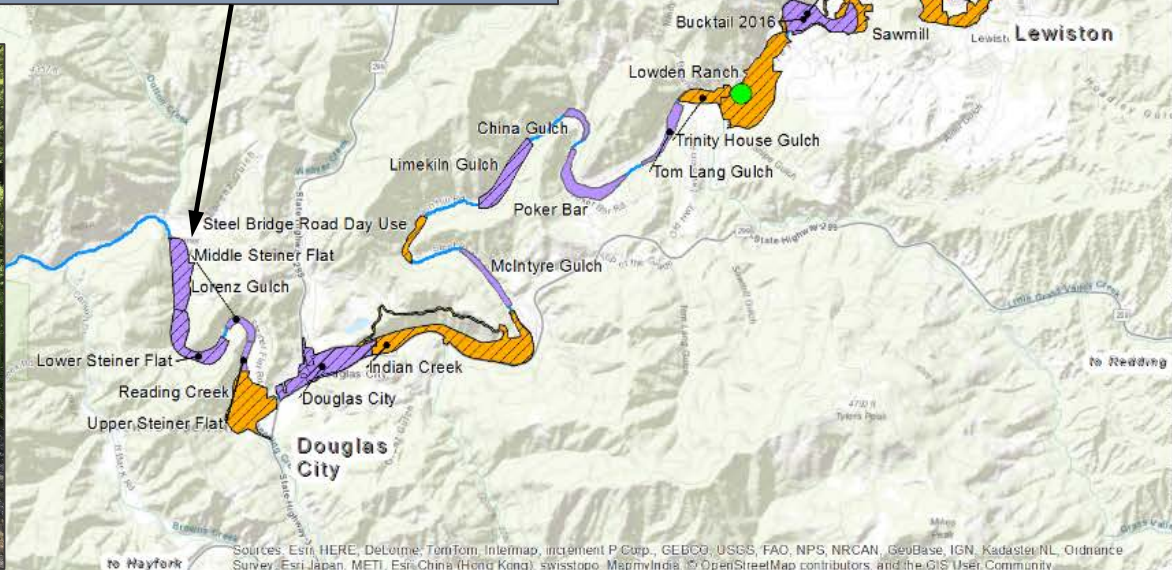


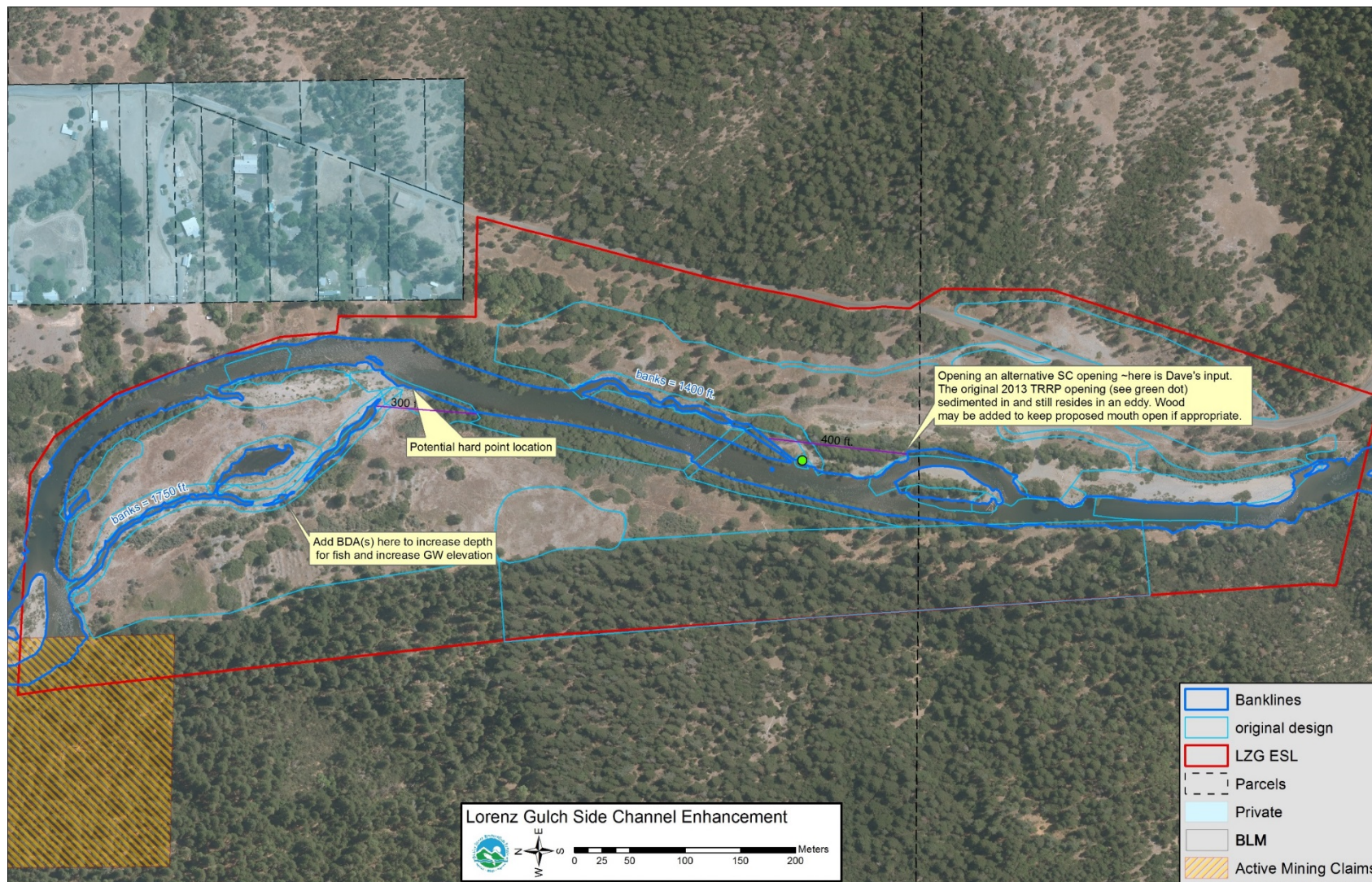
Lorenz Gulch Enhancement (0)

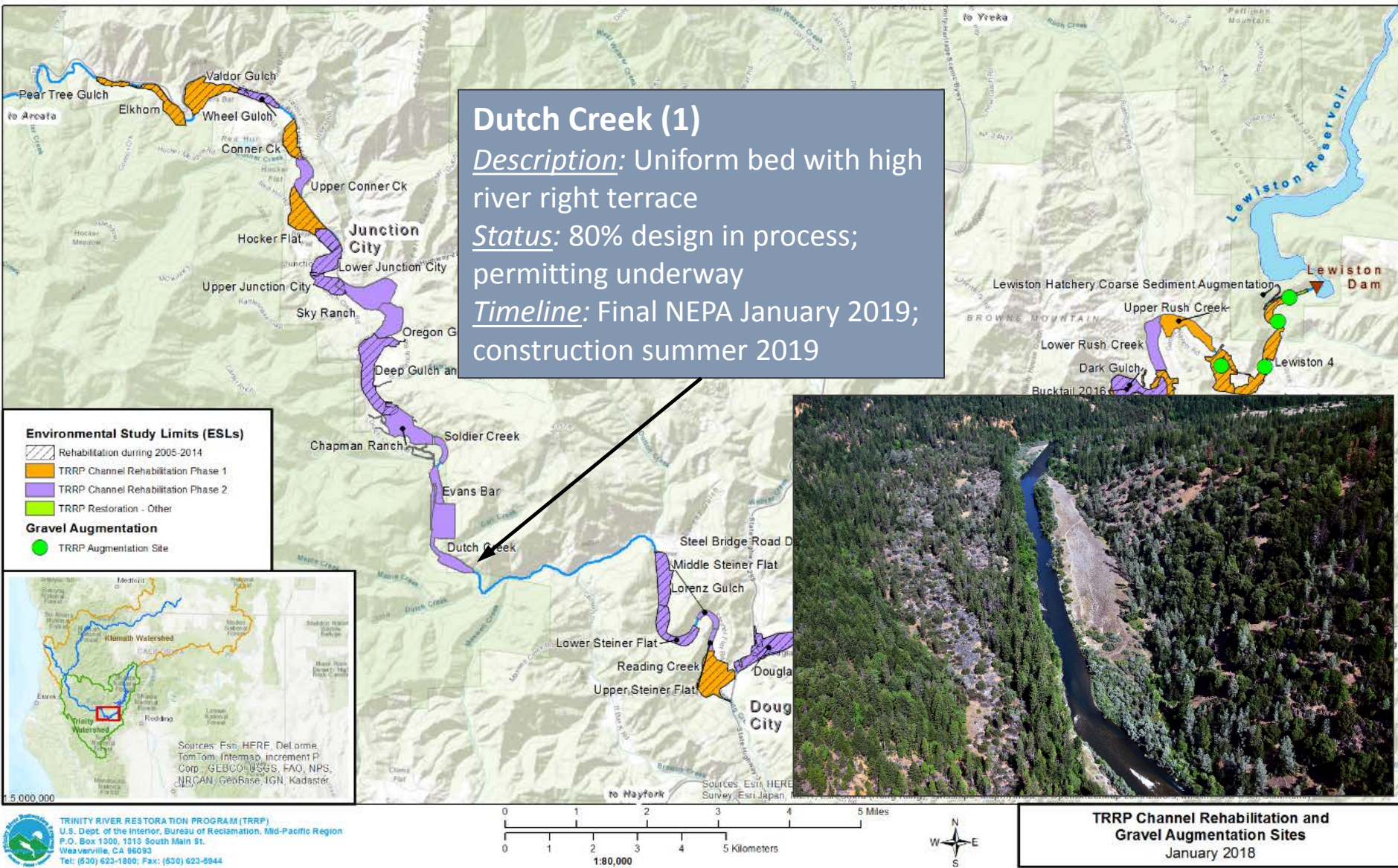
Description: Opportunities exist to enhance low and/or high flow side channels

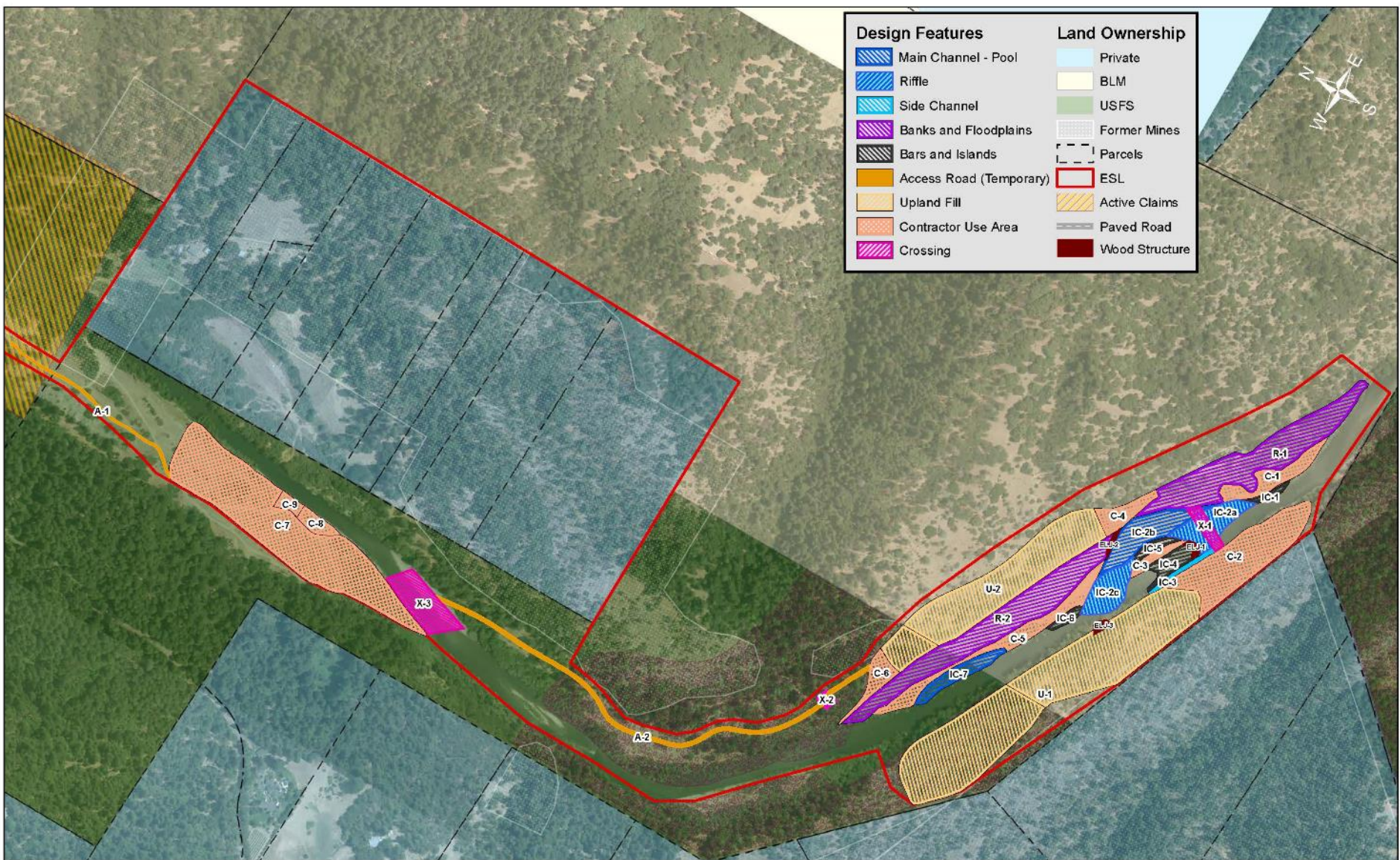
Status: Not designed

Timeline: To be discussed at June Design meeting.









Evans Bar (1)

Description: Simplified channel with high, wide river left terrace


Status: Design to start following completion of Dutch Creek design, likely fall 2018

Timeline: Undetermined

Environmental Study Limits (ESLs)

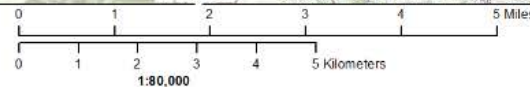
-  Rehabilitation during 2005-2014
-  TRRP Channel Rehabilitation Phase 1
-  TRRP Channel Rehabilitation Phase 2
-  TRRP Restoration - Other

Gravel Augmentation

-  TRRP Augmentation Site



TRINITY RIVER RESTORATION PROGRAM (TRRP)
U.S. Dept. of the Interior, Bureau of Reclamation, Mid-Pacific Region
P.O. Box 1300, 1310 South Main St.
Weaverville, CA 96093
Tel: (530) 623-1800; Fax: (530) 623-9944



TRRP Channel Rehabilitation and
Gravel Augmentation Sites
January 2018



Soldier Creek (1)

Description: Valley wall channel interacting with bedrock


Status: Not designed

Timeline: Not in queue

Environmental Study Limits (ESLs)

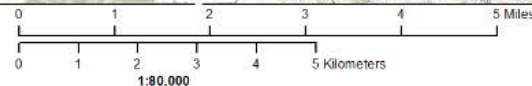
-  Rehabilitation during 2005-2014
-  TRRP Channel Rehabilitation Phase 1
-  TRRP Channel Rehabilitation Phase 2
-  TRRP Restoration - Other

Gravel Augmentation

-  TRRP Augmentation Site



TRINITY RIVER RESTORATION PROGRAM (TRRP)
U.S. Dept. of the Interior, Bureau of Reclamation, Mid-Pacific Region
P.O. Box 1300, 1310 South Main St.
Weaverville, CA 96093
Tel: (530) 623-1800; Fax: (530) 623-9944



TRRP Channel Rehabilitation and
Gravel Augmentation Sites
January 2018



Chapman Ranch (1)

Description: Heavily mine altered; large tailings and mine terrace


Status: 90% design report; NEPA initiated. Public draft EA fall 2018.

Timeline: Phase A could commence in 2019

Environmental Study Limits (ESLs)

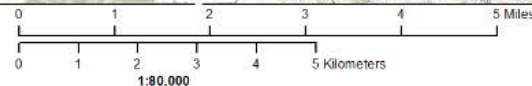
-  Rehabilitation during 2005-2014
-  TRRP Channel Rehabilitation Phase 1
-  TRRP Channel Rehabilitation Phase 2
-  TRRP Restoration - Other

Gravel Augmentation

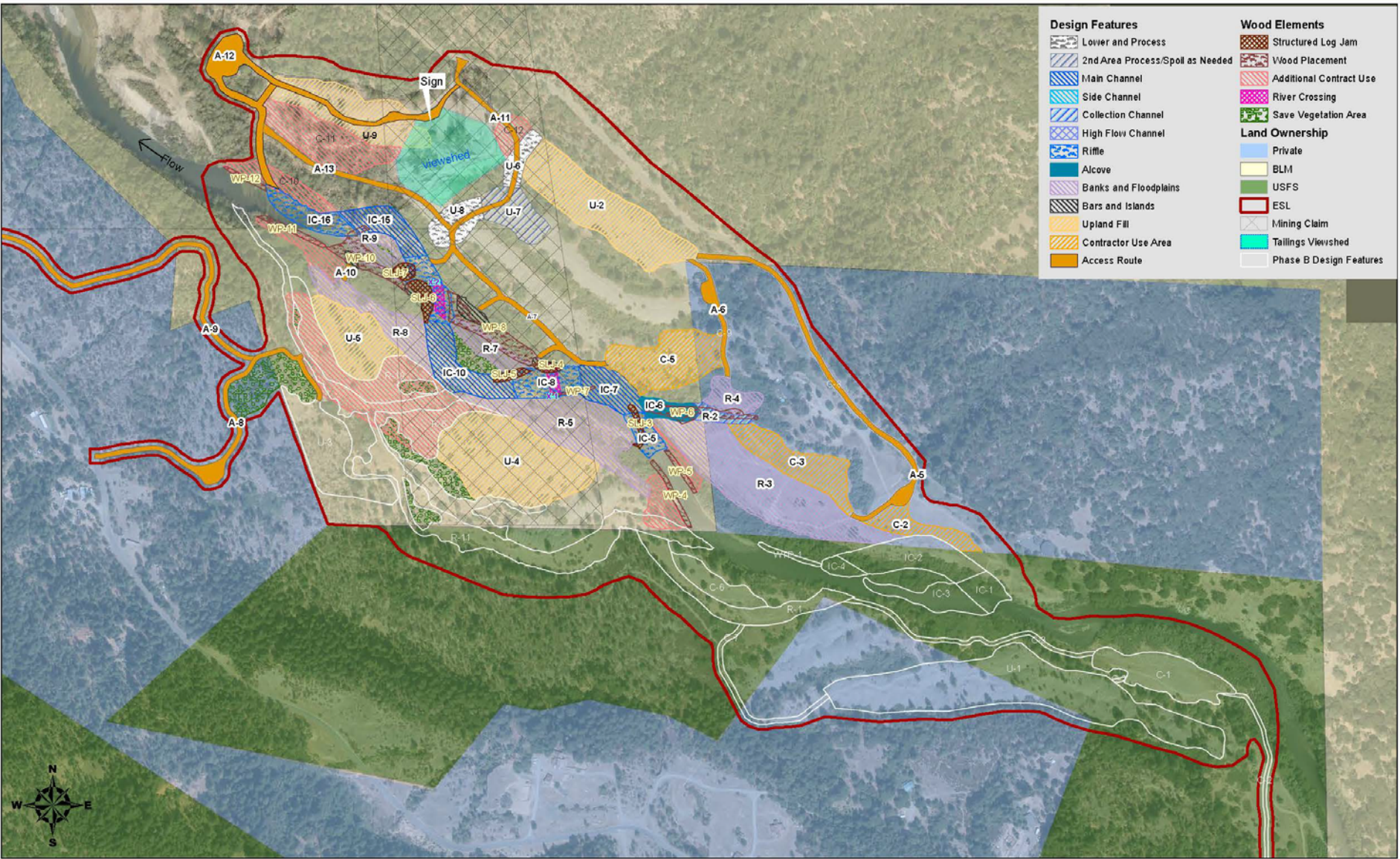
-  TRRP Augmentation Site



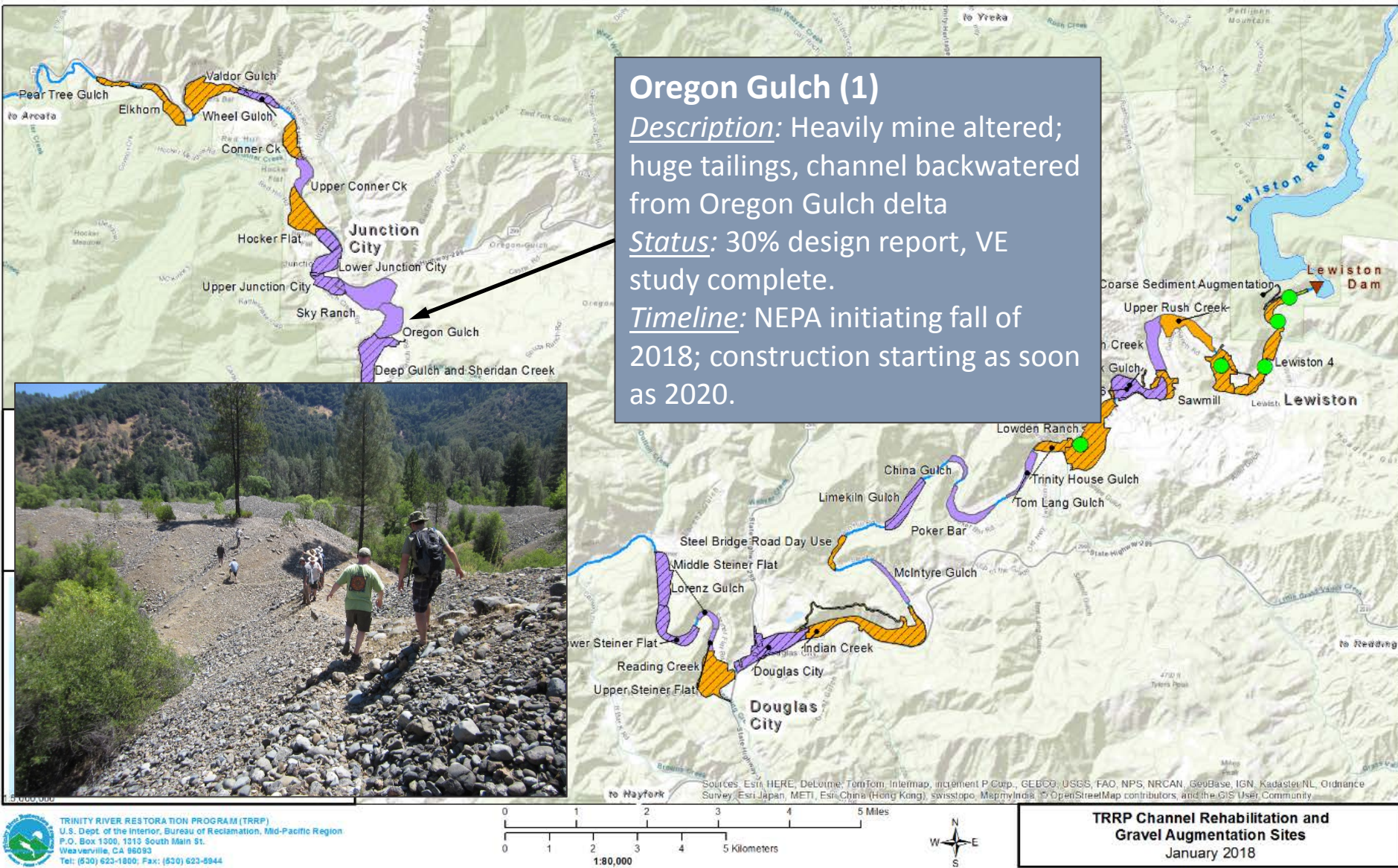
TRINITY RIVER RESTORATION PROGRAM (TRRP)
U.S. Dept. of the Interior, Bureau of Reclamation, Mid-Pacific Region
P.O. Box 1300, 1310 South Main St.
Weaverville, CA 96093
Tel: (530) 623-1800; Fax: (530) 623-9944



TRRP Channel Rehabilitation and
Gravel Augmentation Sites
January 2018



Document Path: C:\Users\jmosley\Desktop\Chapman_Design_New\AllPhases.mxd

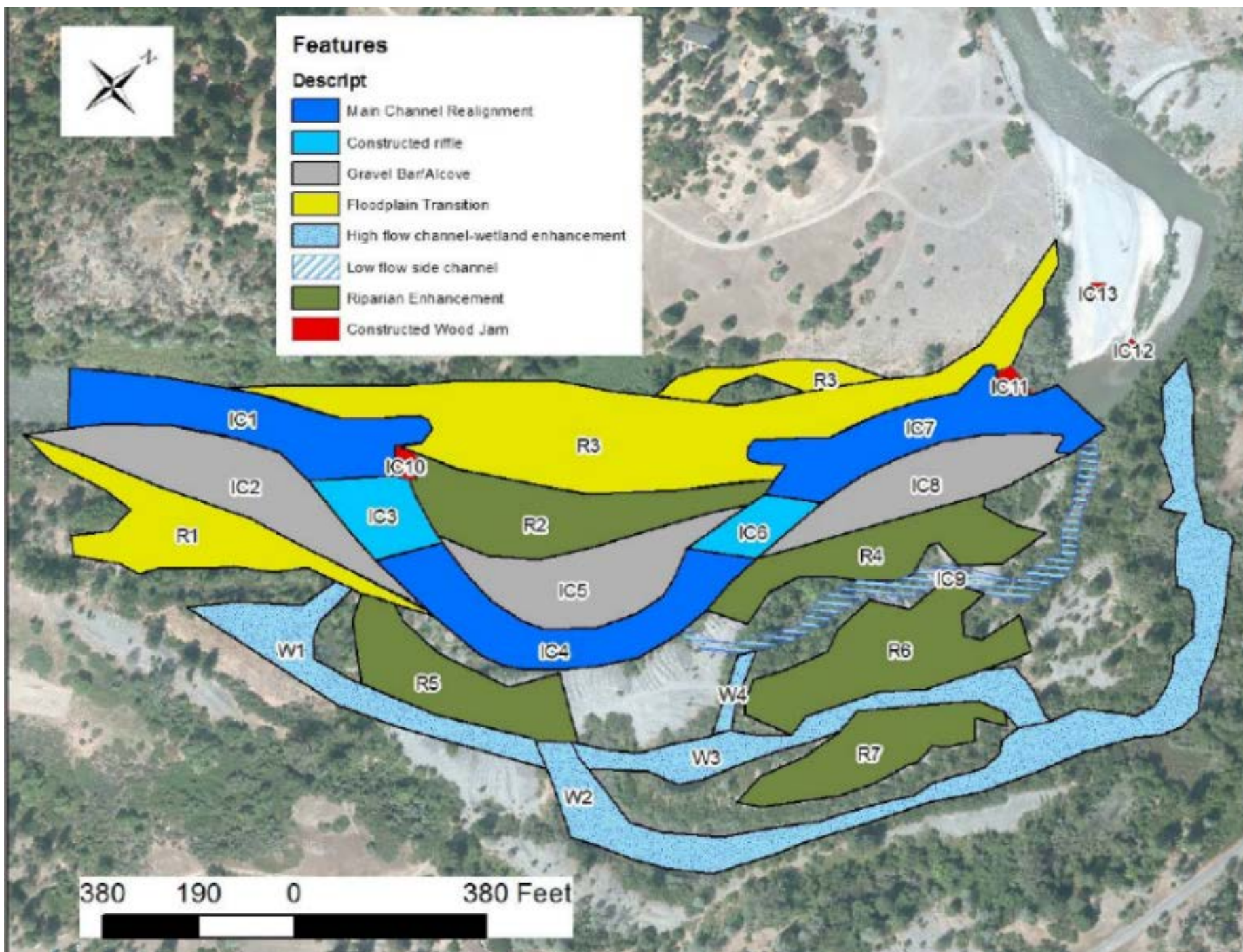


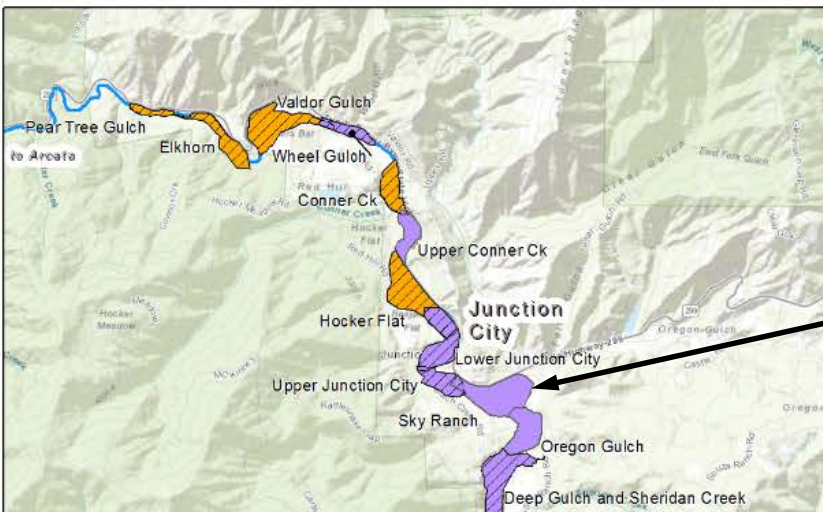


Features

Descript

- Main Channel Realignment
- Constructed riffle
- Gravel Bar/Alcove
- Floodplain Transition
- High flow channel-wetland enhancement
- Low flow side channel
- Riparian Enhancement
- Constructed Wood Jam



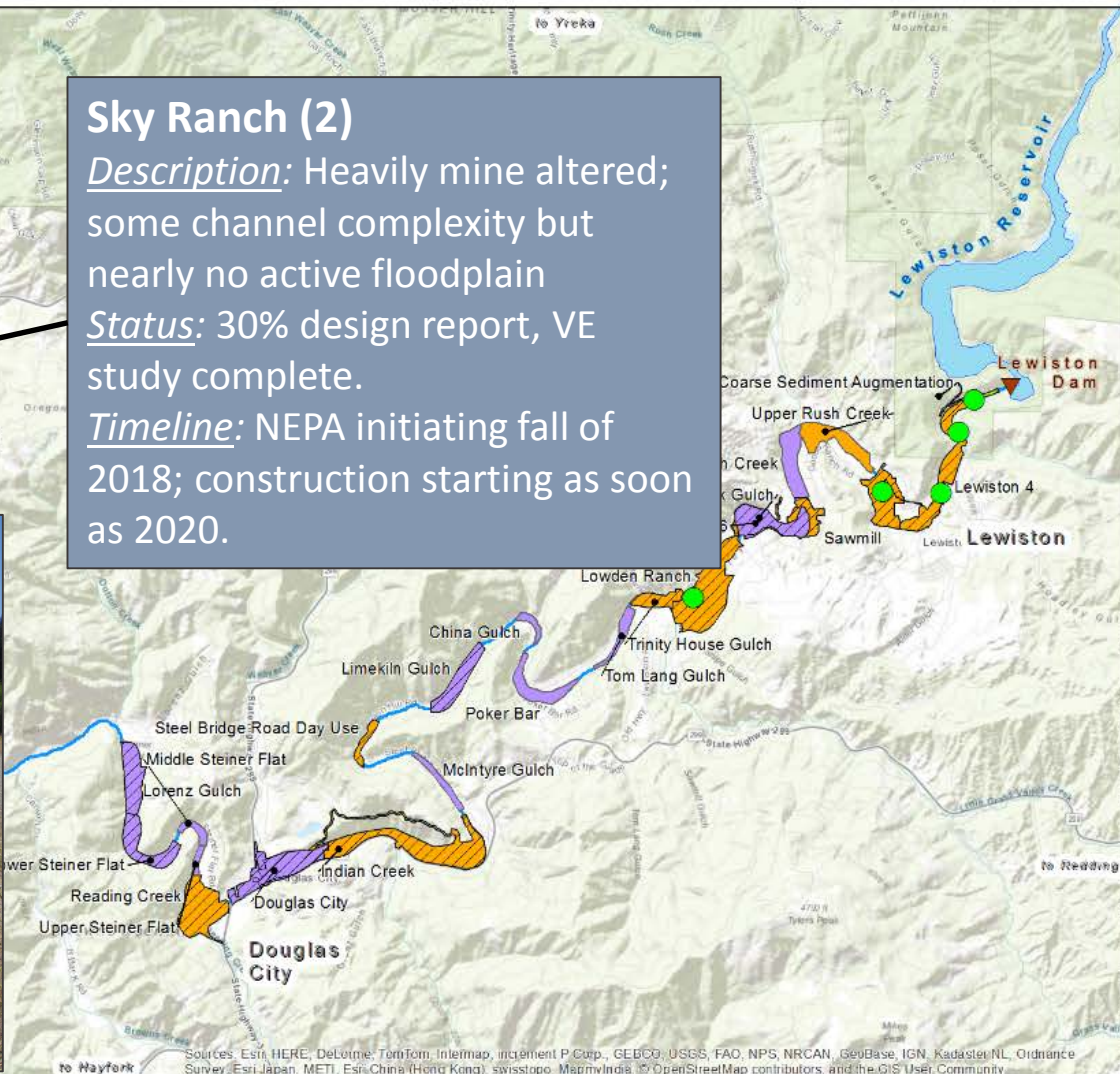


Sky Ranch (2)

Description: Heavily mine altered; some channel complexity but nearly no active floodplain

Status: 30% design report, VE study complete.

Timeline: NEPA initiating fall of 2018; construction starting as soon as 2020.

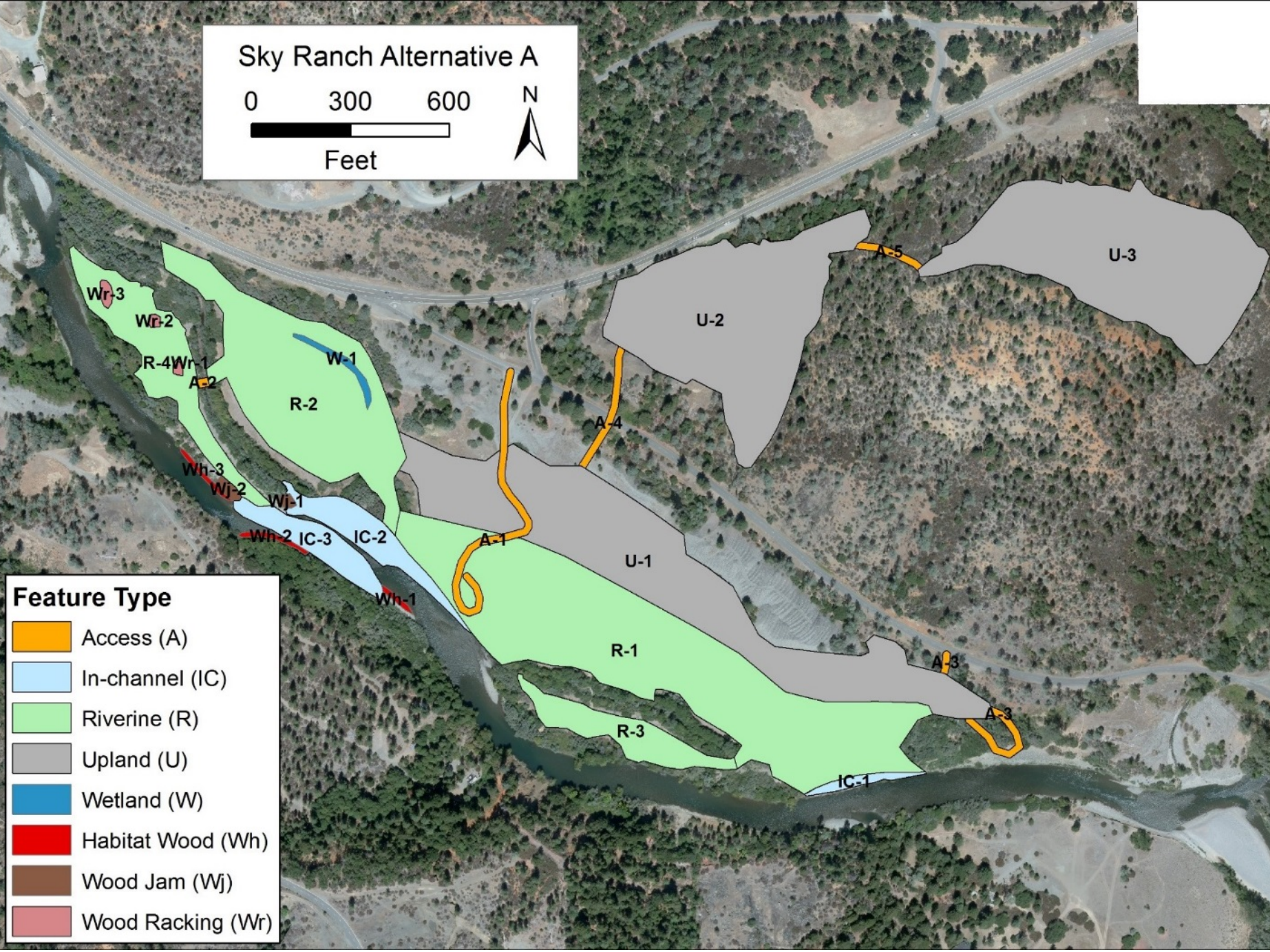


Sky Ranch Alternative A

0 300 600



Feet




Feature Type

- Access (A)
- In-channel (IC)
- Riverine (R)
- Upland (U)
- Wetland (W)
- Habitat Wood (Wh)
- Wood Jam (Wj)
- Wood Racking (Wr)

Back to bean counting...

Of the EIS' "47 sites":

- 32 constructed
- 5 unlikely to be constructed
- At least 2 have landowner/access issues
- 2 sites not in the EIS identified in EIR
- Likely additional work at some constructed sites

An aerial photograph of a river system. The river flows from the top right towards the bottom left. On either side of the river, there are wide, terraced gravel bars or terraces, which are light gray and appear to be composed of small stones and pebbles. These terraces are separated by narrow strips of green vegetation, including small trees and shrubs. The overall landscape is a mix of light gray gravel and green foliage. A semi-transparent blue rectangular box is overlaid on the center of the image, containing white text.

Implementation for next 7-8 years will
take a cafeteria approach – multiple
projects designed and permitted,
building out based on available funds
and in response to unforeseen hurdles
and lessons learned

Questions?

